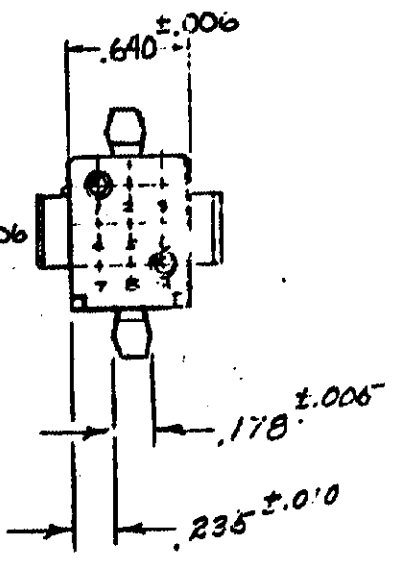
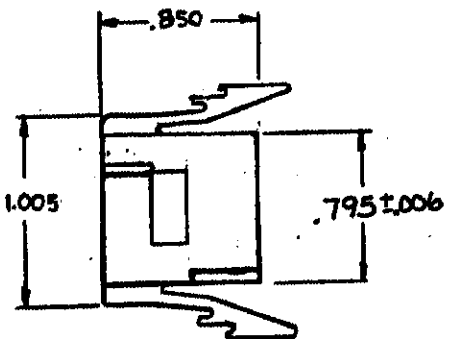
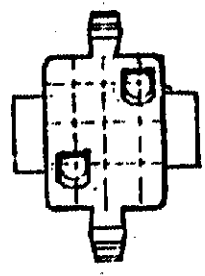


SHEET I OF II
 NUMBER
480274



NOTE-
 1- TO BE USED WITH MATE-N-LOK SOCKETS.
 2- TO BE USED WITH CAP HOUSING 480277.
 3- SEE SHEET II FOR MOUNTING INFORMATION.

| HOUSING N ^o | COLOR |
|------------------------|---------|
| 1-480274-0 | NATURAL |
| | |
| | |
| | |
| | |
| | |
| | |
| | |
| | |
| | |

DIMENSIONS IN INCHES. DO NOT SCALE PRINT.

| | | | | | |
|--|--|--|--|--|--|
| | | | | | |
| | | | | | |
| | | | | | |
| | | | | | |
| | | | | | |
| | | | | | |
| | | | | | |
| | | | | | |

| | | | | |
|-----|--|-----|-----|---------|
| P | OBS. 1--1 PER CM 2708 | TB | RS | 1-11-78 |
| N | OBS. 1--2, 1--7 & 1--9 PER CM-895 | PKC | TB | 6/17/87 |
| M | OBS. 1-341-6 PER CM-158 | PKC | TB | 4/21/87 |
| L | OBSELETE 1--4, 1--5 1--5 PER CM-473 REV PER CM-399 | MA | RS | 5/24/84 |
| LTR | REVISION RECORD | DR | CHK | DATE |

©1964 BY AMP INCORPORATED, ALL RIGHTS RESERVED. AMP PRODUCTS COVERED BY PATENTS AND/OR PATENTS PENDING.

CUSTOMER COPY REFERENCE ONLY

MATERIAL: **NYLON**
 WIRE — RANGE — INSULATION —
 AS NOTED ±.010 ±.1° 0' 1:1

AMP AMP INCORPORATED HARRISBURG, PENNA.
 CLASS: .086 SOCKET HOUSING

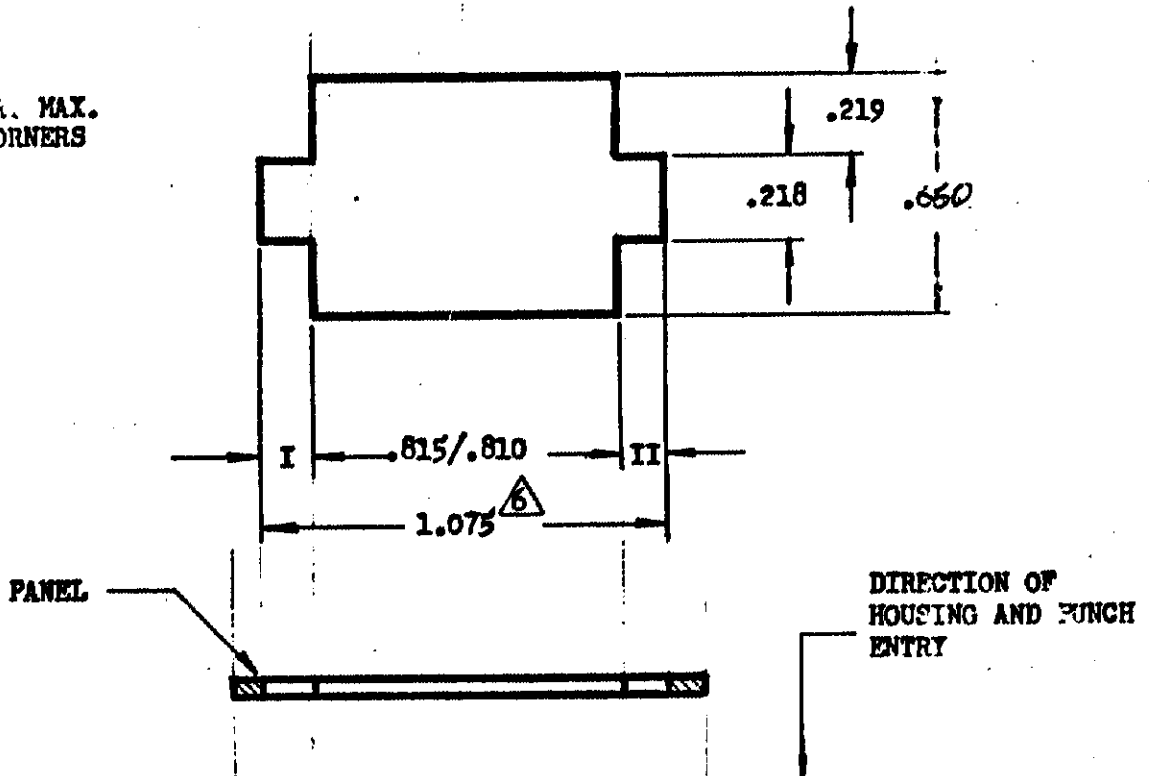
TYPE: PANEL MOUNT.
 TOLERANCE EXCEPT AS NOTED ±.010 ±.1° 0' 1:1
 LOC: CM A NO SHEET I OF II
 480274 REV P

NAME: 9 CIRCUIT MATE-N-LOK™ PLUG

PRINT/CHK: **K**
 53
 C.R. STOYER 11/2/84
 DE R.W. Williams 11-11-81
 APP 4/21/87 11/11/84

SHEET 2 OF
NUMBER
480274

.015 R. MAX.
ALL CORNERS



- NOTE: 1. Recommended panel thickness .025-.065.
2. Both locking legs to be squeezed together and housing to be inserted straight-in, as opposed to a rocking manner of insertion.
3. The panel must be punched so that the housing enters the panel in the same direction as the punch.
4. Dimensions I and II to be equal within .005.
5. Panel must not have any material (paint, porcelain, etc.) applied in the mounting hole area that would decrease retention of the housing in the panel.
- ⚠ If Notes 3 and/or 5 are not complied with, the 1.075 dimension should be reduced to 1.055 to assure proper housing retention in the panel.

DIMENSIONS IN INCHES. DO NOT SCALE PRINT.

PRINT DIST
53

| | | | | | | |
|--|--|--|--|--|-------------------------------------|--------------------------|
| | | | | | ALTR DR DAYTON HOLMES 7-26-72 | DE DE |
| | | | | | CHK J. Humble 7-26-72 | APP J. Humble 7-26-72 |

| | | | | | |
|---|--|------------|--|--------------|--|
| ©1972 BY AMP INCORPORATED. ALL RIGHTS RESERVED. AMP PRODUCTS COVERED BY PATENTS AND/OR PATENTS PENDING. | | | CUSTOMER COPY REFERENCE ONLY | | |
| MATERIAL AND FINISH # | | | AMP INCORPORATED HARRISBURG, PENNA. | | |
| WIRE — RANGE — INSULATION # — # | | | CLASS # | | |
| TOLERANCE EXCEPT AS NOTED ± .005 E 1" 0' | | | TYPE # | | |
| SCALE 2-1 | | L' CM A | | NO 480274 | |
| NAME RECOMMENDED MOUNTING INFORMATION 9 CIRCUIT MATE-N-LOK™ PANEL MOUNT PLUG | | | | | |